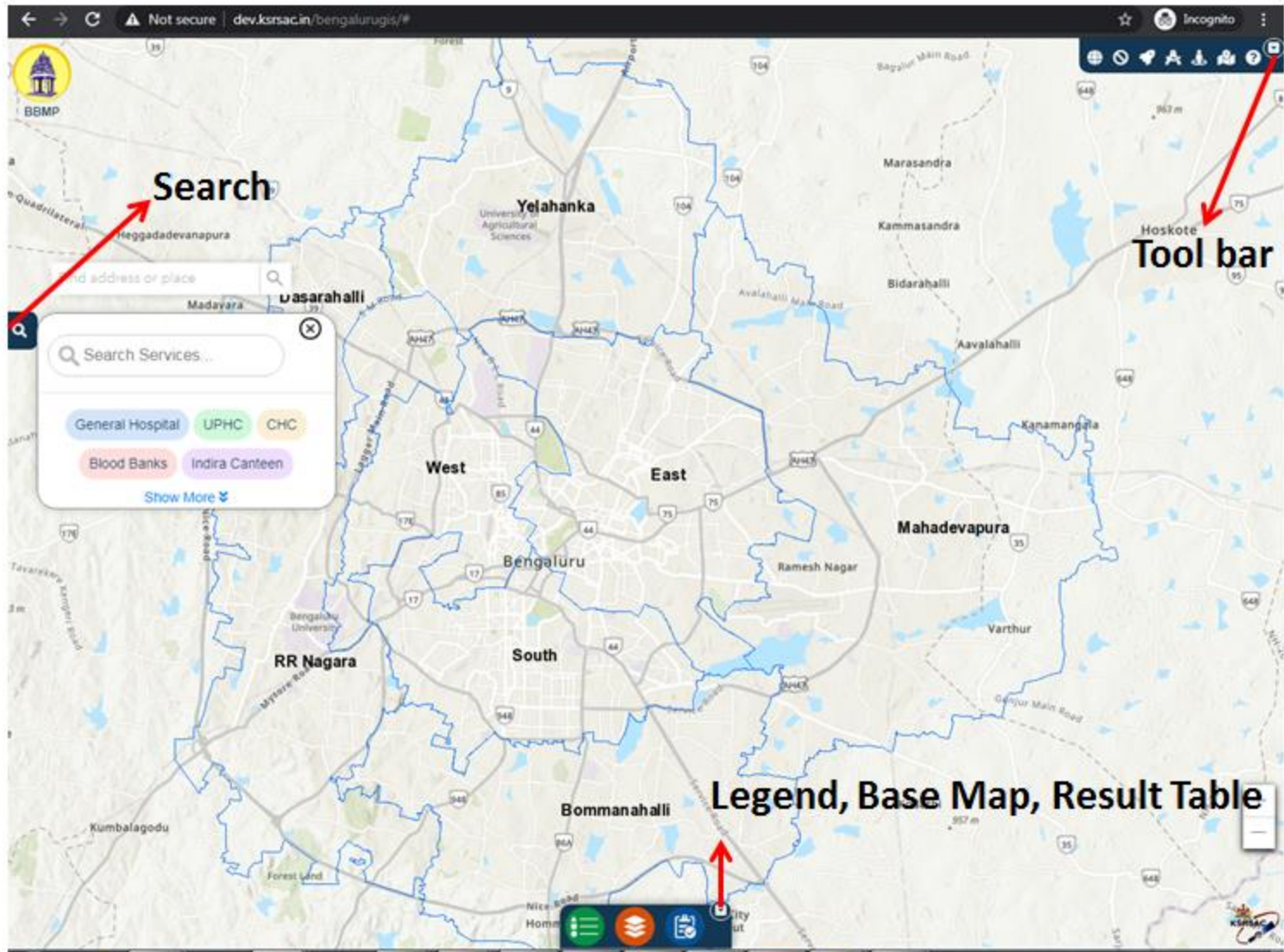


Landing page screen

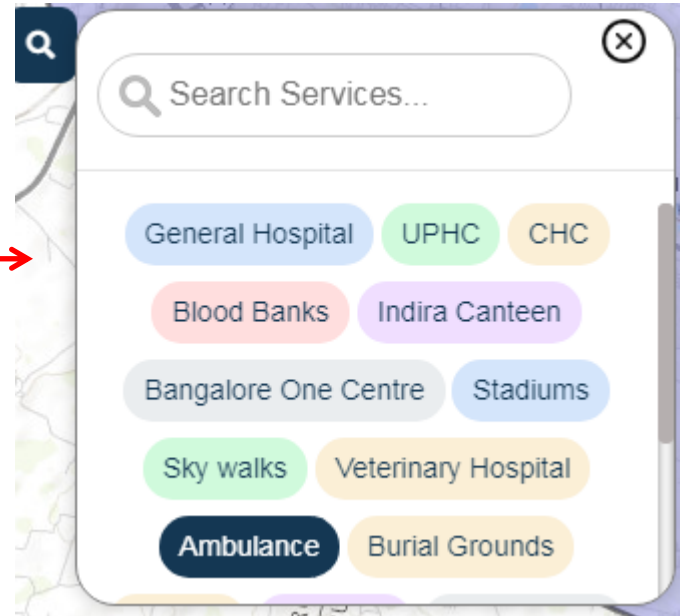


Show/ Hide options for Search Service layer



Search Layers Off

Search Layers On

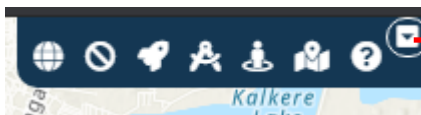


Show/ Hide options for Legend, Base map and Result table



Click to Show / Hide

Show/ Hide for Tool bar



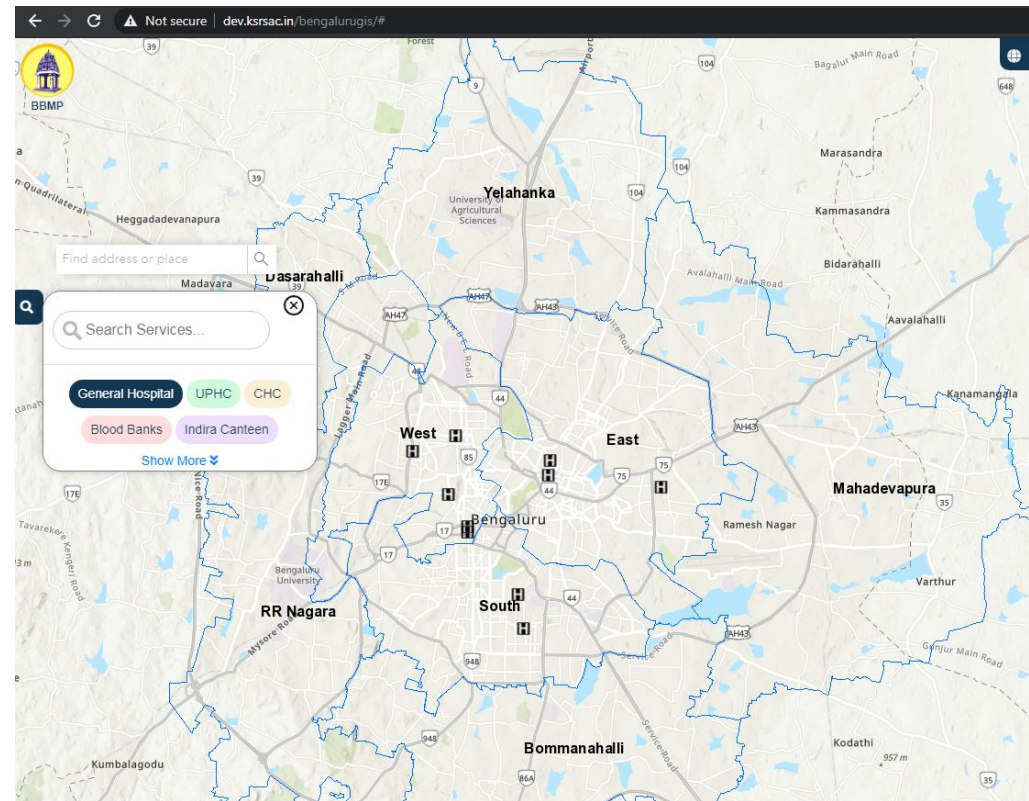
Click to Show / Hide tool bar

Service Layer Selection

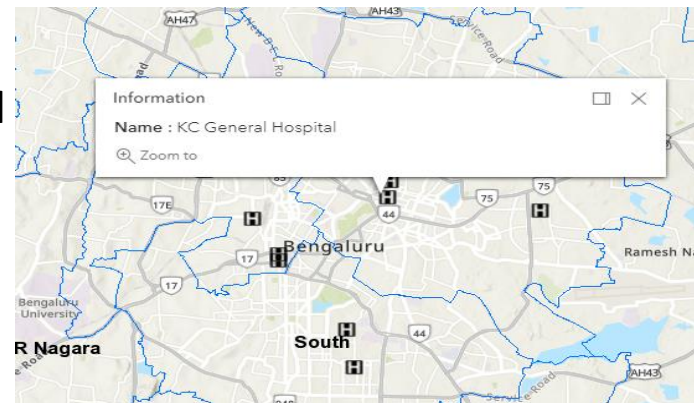
- Selection of Any Service layer from service list will enable the service layer on map

Ex: General Hospital selected from Service layer list.

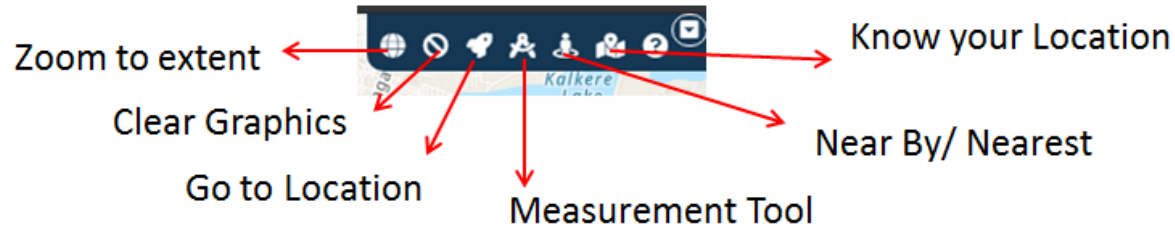
We observe General hospitals layer rendered on map.



- Selecting any point by click on map will rendered Name of the selected point on map



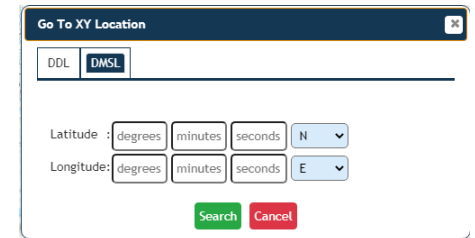
Tool Bar



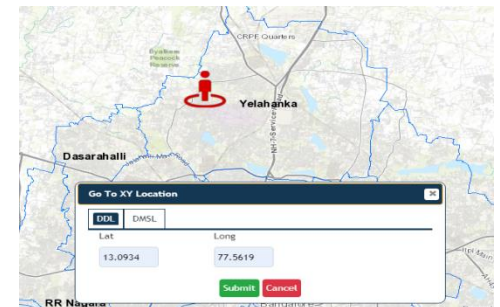
1) **Zoom to extent:** Click on zoom to extent will reset the zoom level to Bengaluru boundary on map.

2) **Clear Graphics:** Click on clear graphic will clear the graphics rendered on map

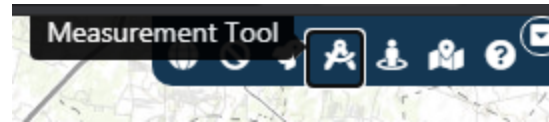
3) **Go to Location:**



- ❖ Click on Go to Location Lat/Long will display a Go to XY Location window
- ❖ Select DDL / DMSL tab
- ❖ User need to provide Latitude and Longitude Values to Zoom in to particular location on map as in screen shot.



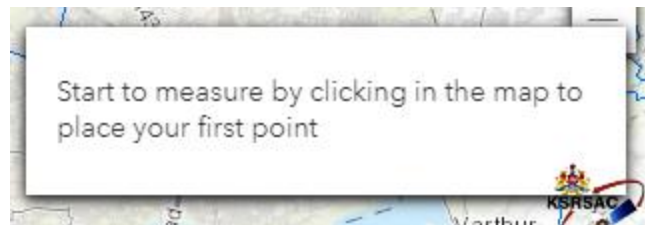
4) Measurement Tool



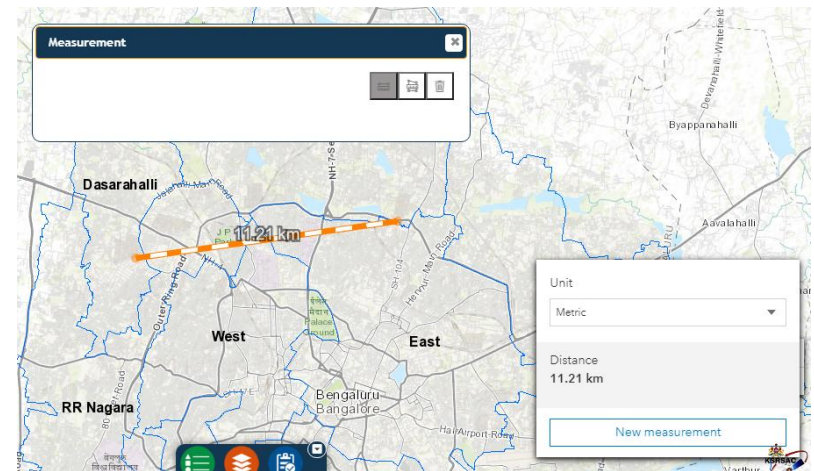
- Click on Measurement tool from tool bar will display measurement window



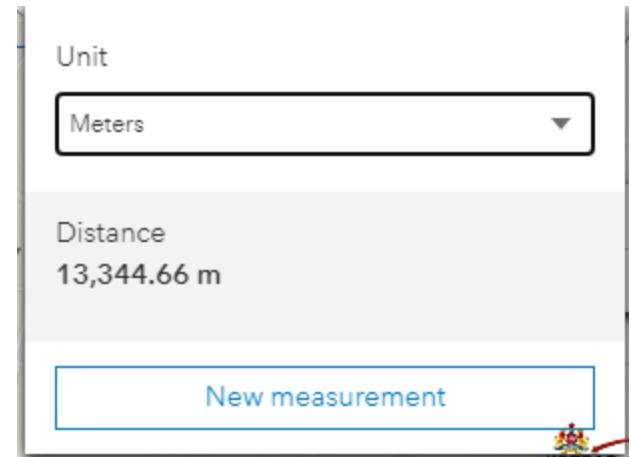
- First icon **1** in Measurement window is **Distance measurement tool**.
Click on Distance measurement tool will display information window as in screen



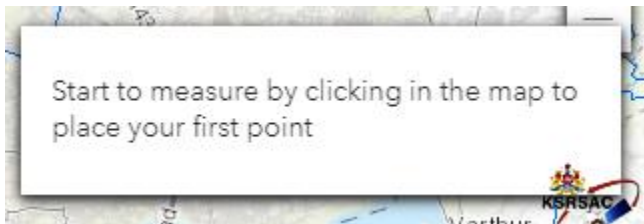
First click on map to starting point
Double click on map for ending point on map to get
Distance between points in various
Measurement units selected from Units
Drop down in another window.



- In this window user has clicked two points and got Distance between points in meters
- User can change the Unit by drop down selection.

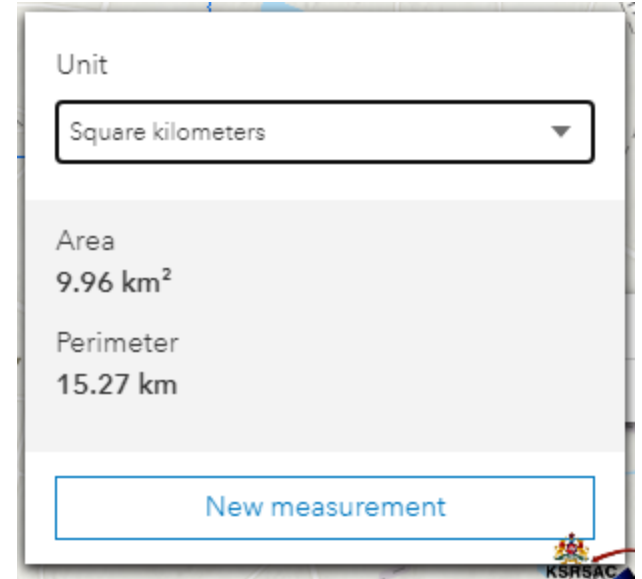


- Second icon **2** in Measurement window is **Area measurement tool** Click on Area measurement tool will display information window as in screen shot



- User will start drawing polygon by selecting point by single click , and finally stop drawing polygon by double click to get area of polygon window.

- In this screen shot user has displayed with Area Of polygon drawn on map in Square kilometers
- User change **Area unit** by selecting from Unit drop down
- Click on New Measurement will clear the measurement done on map.



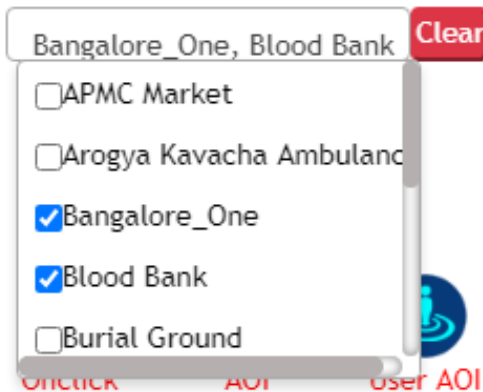
Click on third icon **3** clear Measurement icon to close the Measurement window



5) Near By/Nearest



- Select Layers from Layer selection drop down

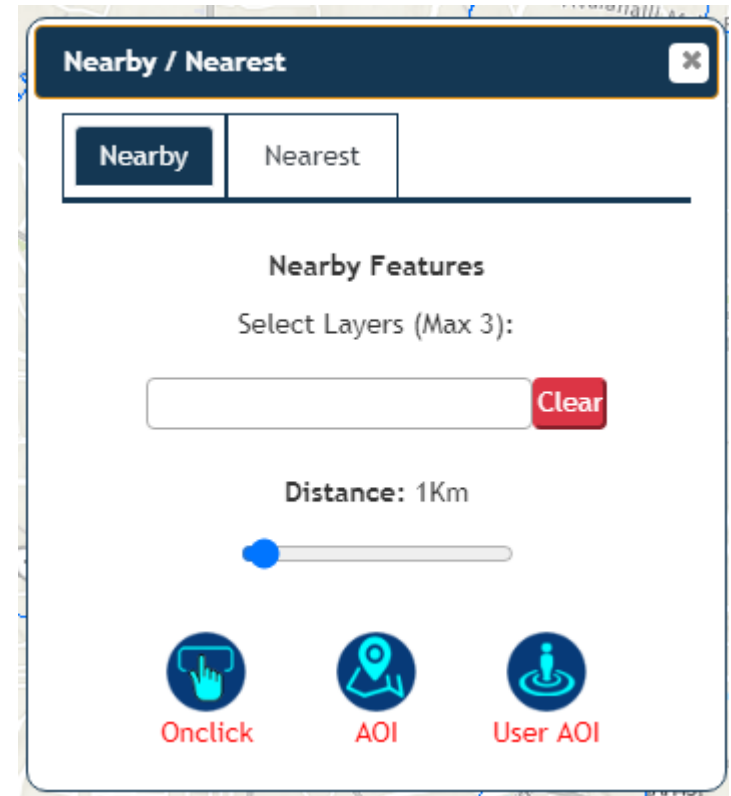


Max 3 layers can be selected from list



- Select Distance by drag button

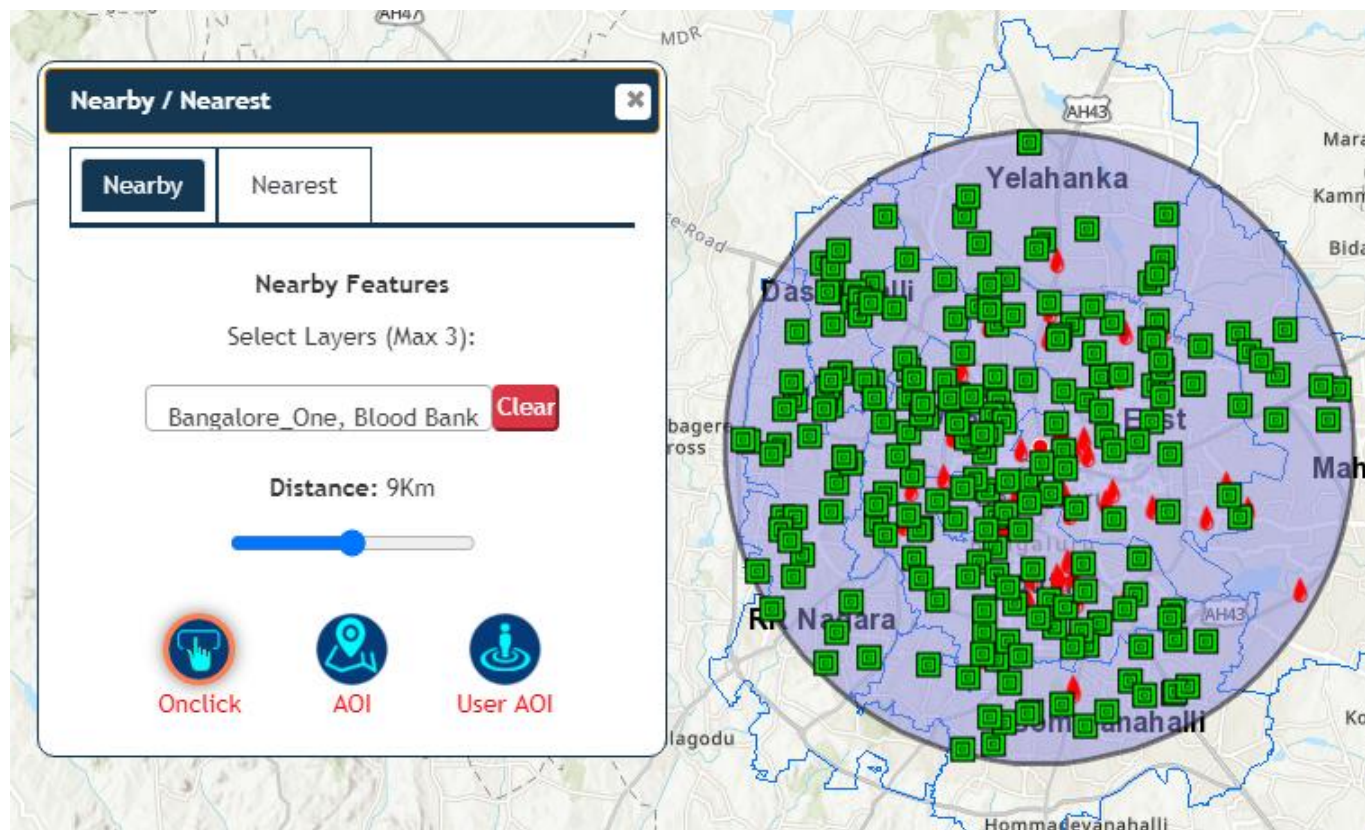


Distance set to 9 km in distance drag button



5.1 On click Selection

- Selected Near By Option tab
- Select a layer from layer from drop down list (max 3 layers can be choose from drop down)
- To unselect the layers click on clear button 
- Select **On click** option
- Click on map
- Selected layers rendered within 9 km on map from point where user has clicked
- Click on Clear graphic from tool bar to clear the layer point displayed on map 



5.2 AOI Selection (Donut)



Onclick

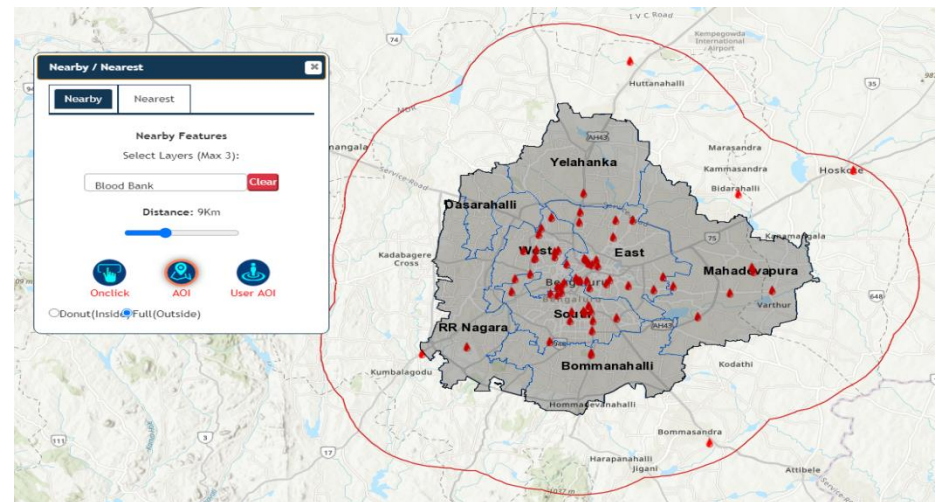
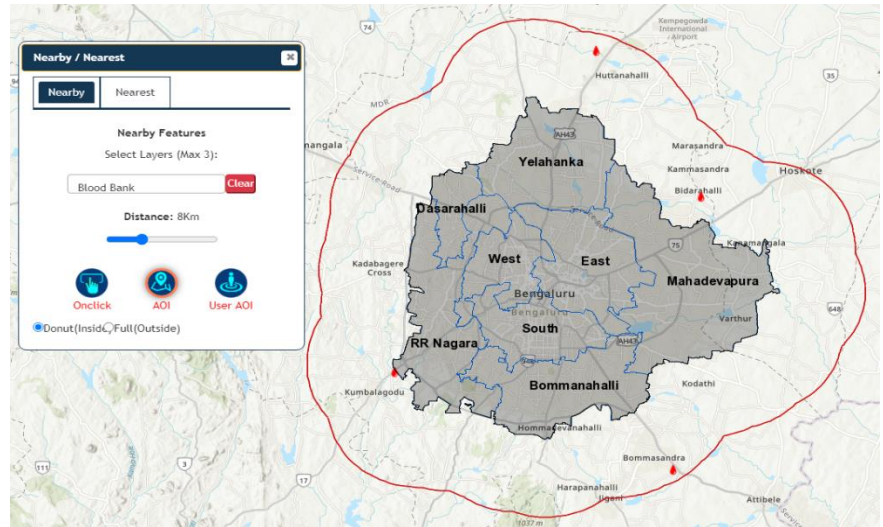
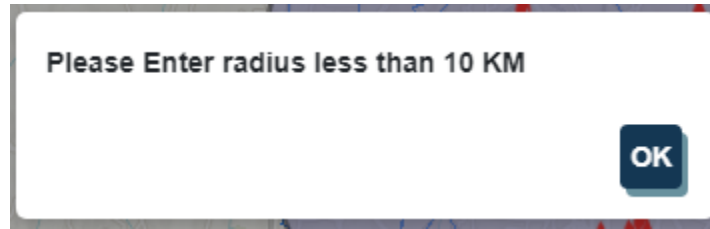


AOI



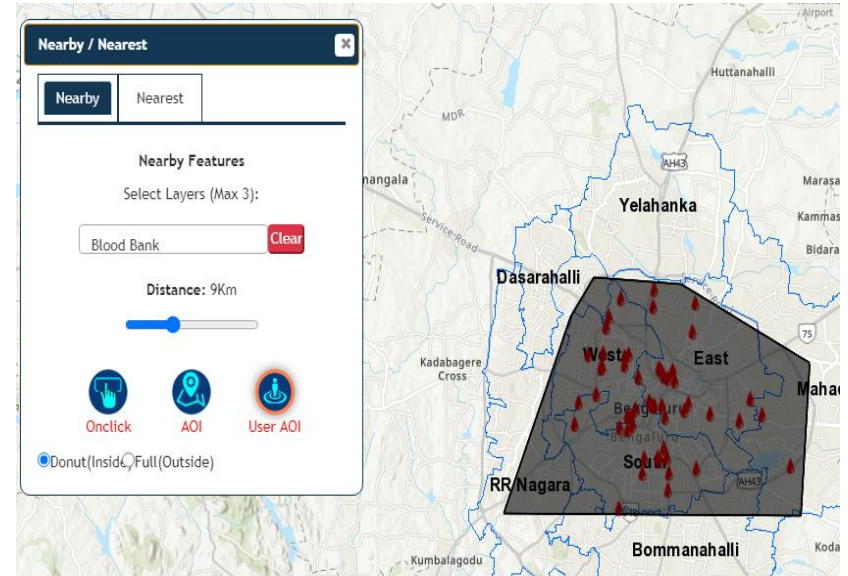
User AOI

- Select A layer from Select Layer drop down
- Set distance within 10 km (Please Enter radius less than 10 KM) message will be displayed if not.
- Click on AOI option
- 10 KM buffer from boundary will be appeared on map
- **Donut radio button** selection will display selected layer points fall between boundary and buffer range.
- **Full (Outside) radio button** selection
- Click on AOI button again
- Full (Outside) will display all the selected layer points within buffer boundary.



5.3 User AOI

- Click on Near By tab
- Select Layer from Select Layer drop down
- Click on User AOI option
- Single click on map to start draw polygon
- Double click on map to stop drawing polygon on map
- Selected layer points within the polygon drawn will be displayed on map.



5.4 Nearest



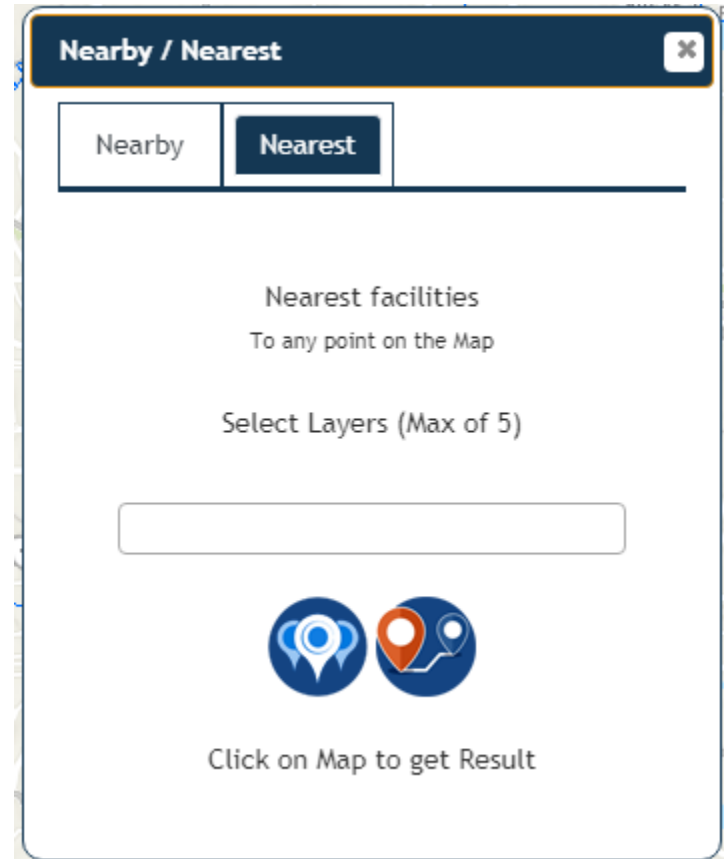
Click on Nearest/Nearby option from tool bar
Click on Nearest tab

Nearest window:
Select Layers (Max of 5).
Click on map to get Nearest 10 icon.
Click on map to get Nearest 5 icon.

Steps 1: Click on Select Layers drop down and select
Max 5 layers from drop down list

Step2: Click on either any nearest 10 facilities /
Nearest 5 facilities

Result: Nearest 5/10 facilities will be displayed on map
And in result table as well



5.5 Result Table

Near By/Nearest Result table

All the results displayed on map for Nearest / Near By will have the values in result table

Result table will be found at bottom of the map page.



- After Near By/Nearest facility query if click on result table.

User can able to download results

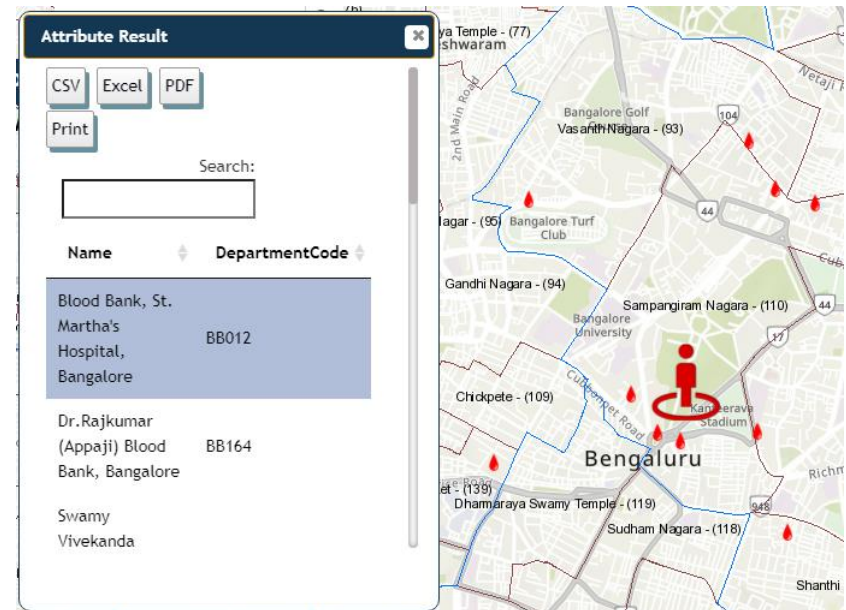
Table in various format

- CSV
- Excel
- PDF
- Print



- User can able to sort based on column name By click on column name.
- User can able to Search a data by click and type in search text

Search:



Name	DepartmentCode
Blood Bank, St. Martha's Hospital, Bangalore	BB012
Dr.Rajkumar (Appaji) Blood Bank, Bangalore	BB164
Swamy Vivekanda	

6 Know Your Location



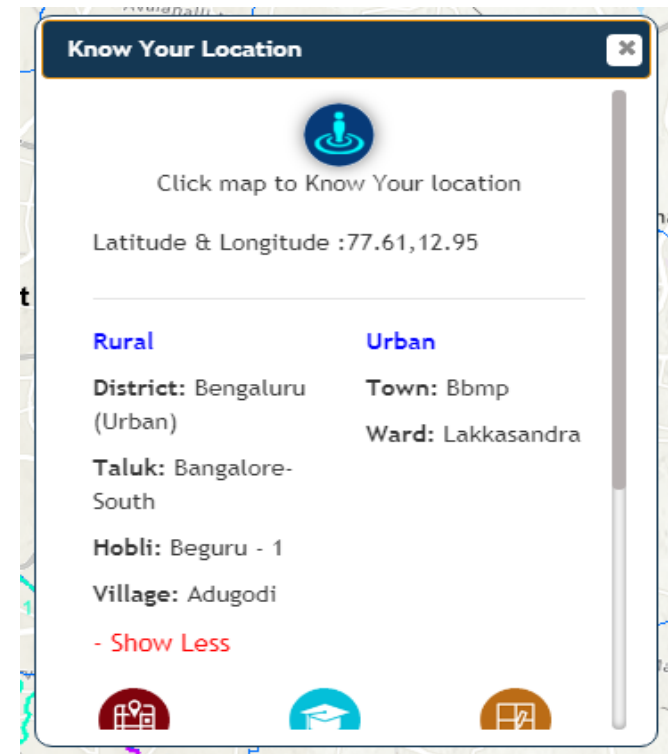
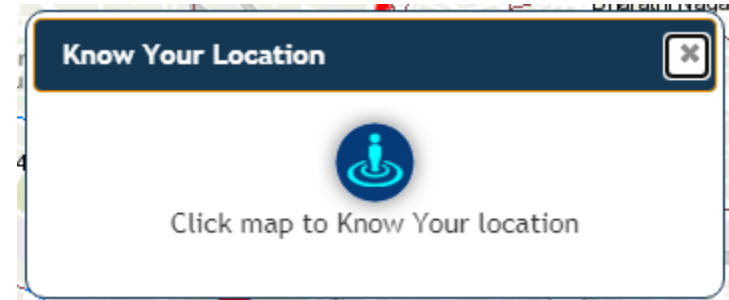
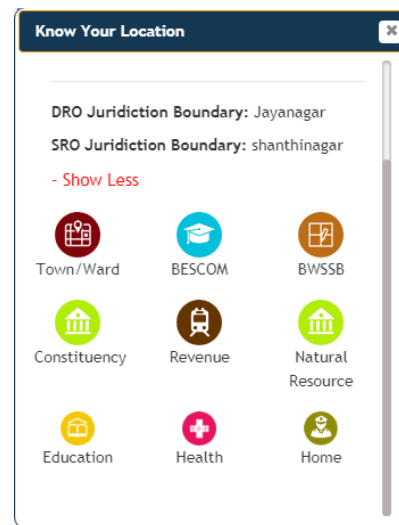
Click on know your location icon in Tool bar user will get Know your location window.

After click on person icon of know your location Window

Click on map to know about that location on map.

User will be able to know about location

- Town/ Ward Boundary.
- BESCOM boundary,
- BWSSB boundary.
- Constituency Boundary.
- Revenue Boundary.
- Natural Resource.
- Education.
- Health.
- Home.
- Industry.

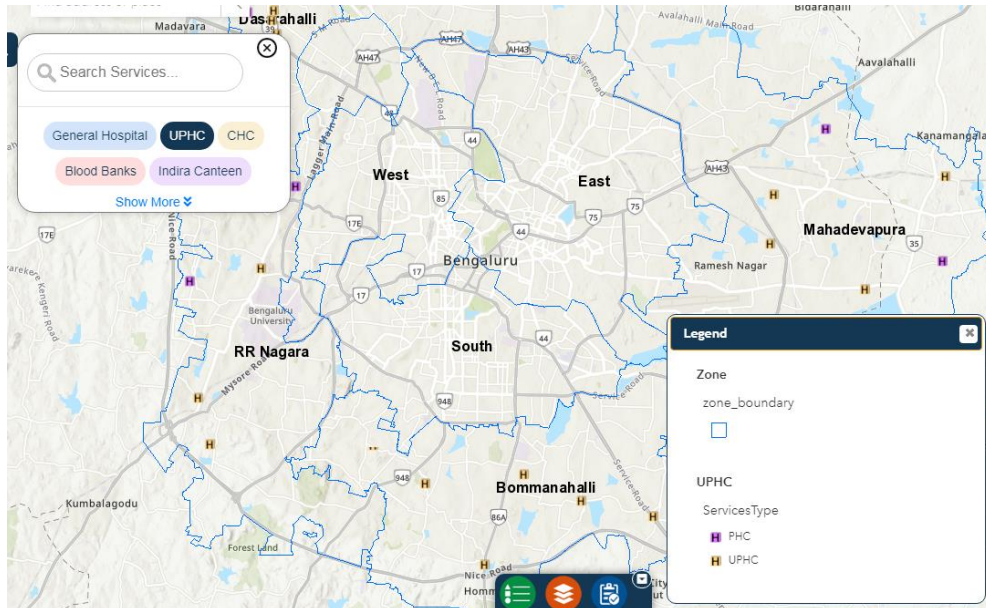
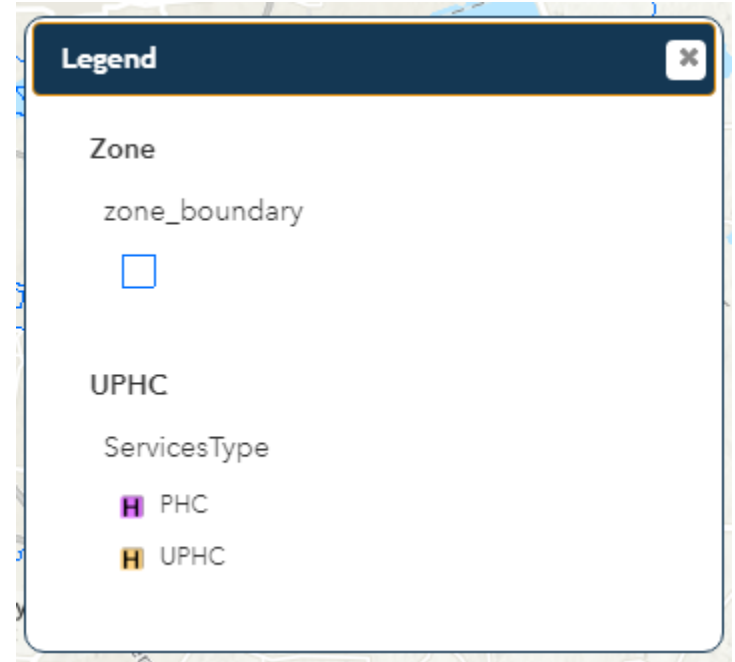


Legend

Legend found in footer of the page click on Legend icon will enable the legend page



In Legend window legend for the values displayed on map whenever a Layer is selected or any Near by / Nearest functionality Fetch results on map.



Base Map



Base Maps were found in footer of the page, click on Base Maps icon will enable the Base Map selection page.

Based on User selection Base map will change on map.

